



Manufacturing Attractive Bird Products

71024 Co. Rd. 13 Nappanee, IN 46550 • Toll Free (866) 546-0423
(574) 773-4975 • FAX (574) 773-7282

Deluxe Gourd Rack on 3” pole with Winch Add-On

SAFETY INSTRUCTIONS: Read and understand all of the instructions and cautions prior to the assembly and installation of the gourd system. Assemble and install gourd system only to the following instructions as improper installation could result in damage or serious injury.

LOCATION Your gourd system should be as far away from trees as possible. An average minimum distance of 40 feet away from trees is required. Martins like wide open flight paths around their housing. Think of your martin housing being an airport and the martin as the airplane. Martins prefer to have two or more runways to land and take off. Also, martin housing should be no closer than 25 feet or no further than 120 feet from human housing. Martins like to be close to people.

STEP 1: Using a post hole digger, dig a hole 36” deep by 9” diameter. Depending on your soil conditions, a large diameter hole may be needed. Remove the 2-1/2” square steel ground stake from the aluminum pole. Stand the ground stake in the center of your hole. The painted end with a piece of welded angle along the side is the end which is to be above ground. The nut welded at the opposite end will be at the bottom of hole. The welded nut is for shipping purposes. Fill the hole with wet premixed cement to ground level. Be sure the ground stake is plumb and leave 21” above the cement. Also fill the inside of the ground stake with cement, to prevent water from accumulating and freezing inside. The pole will slide over the ground stake later, so be sure to wipe clean the ground stake of any excess cement. The dimensions above require 2 bags of dry cement mix available at your local building store.

STEP 2: Lay the bottom section of pole (section with no holes) onto a 5 gallon pail or similar object. Slide the splice support of the top section (section with holes at one end) into either end of the bottom section. The two sections are held together by friction and gravity once erected.

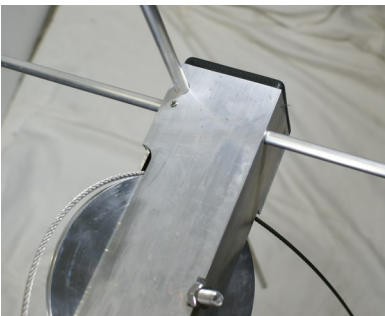
STEP 3: Cut the cable tie and insert the end of the cable, which has a loop, into the slot located at the top end of the pole.

STEP 4: Insert the 6” aluminum pulley into the slot making sure your cable will be on the top end of the pulley.

STEP 5: Attach the 6” pulley to the pole by inserting the 3/8” x 5” bolt through the pole and pulley. Secure with 3/8” locknut.



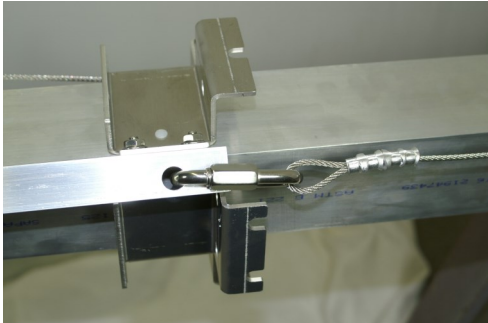
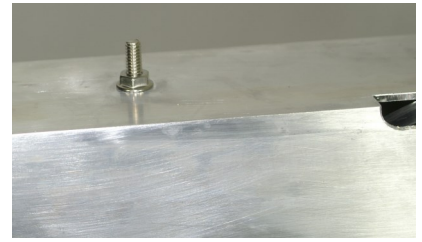
STEP 6: Slide both perch rods into the top two holes in the pole. Center both rods and secure with two 1/4” set screws and allen wrench included with the hardware.



STEP 7: Insert the black cap into the top end of the pole. The cap is held in place by friction. You may need to gently tap the cap using a hammer. The black cap is important to keep water from filling the inside of the pole.

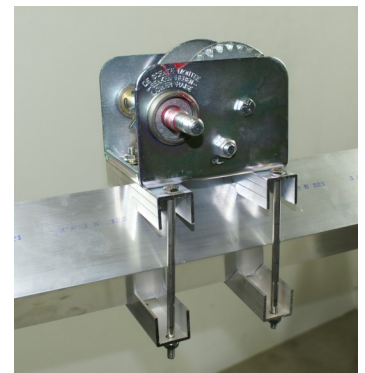
STEP 8: Place a stop bolt which is 1/4 x 3-3/4" into the remaining hole and secure with 1/4" flange nut.

STEP 9: Orient the hub (assembly that slides up and down the pole) so that the 1/2" hole located at the top is in the same corner as the end of the cable with loop. Insert the bottom end of the pole into the top end of the hub and slide the hub upward on the pole.



STEP 10: Insert the quick link found in your hardware bag into the 1/2" hole and attach the cable loop. Close the quick link and tighten with wrench.

STEP 11: Attach the winch to the bottom end of the pole at your desired height using two aluminum u-channel and 1/4 x 5-1/2" bolts and flange nuts. The cable is to extend straight down at the corner of the pole and should not be twisted around the pole. The u-channel has a V notch and the corner of the pole will fit into the notch. When mounted the winch is on the corner of the pole.



STEP 12: Thread the winch handle onto the winch. Slide the spring onto the winch beside the handle. Secure the spring with the 3/4" wide nut. (See picture on left)



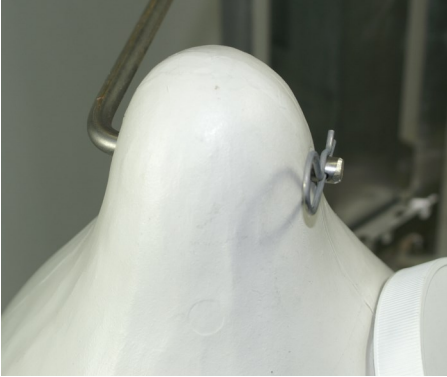
STEP 13: Your gourd system is now ready to be erected. The lower you keep the hub on the pole when erecting, the easier it is to balance. Obtain assistance when erecting as working with objects above your head can cause serious injury. Set the gourd system, with pole, vertically over the ground stake and slide the pole down to ground level

STEP 14: Attach the gourd arms to the hub. The gourd will slide onto the end of the arm with a small hole drilled in it. Insert the opposite end (end with no hole) into the arm bracket. The systems have 3 kinds of arms, straight, right bend and left bend. The straight bends are bundled with yellow rubber bands. The right bends are bundled with red rubber bands. The left bends are bundled with blue rubber bands. **LOOKING AT THE FACE OF THE HUB**, the straight arms (yellow rubber bands) will go into the bracket side with single hole. The right bend (red rubber band) will go into the left hole on bracket side with two holes. The left hand bend (blue rubber bands) will go into the right hole on bracket side with two holes. Make sure the gourd arms are pushed all the way down into the u-shaped slot.



STEP 15: Vertically hung gourds may require their hanging holes to be enlarged to 3/8". Slide the gourd onto the

arm and insert a hitch pin into the small hole, at the end of the arm, to keep the gourd from sliding off. Horizontal gourds require a hitch pin at each end of the gourd.



STEP 16: Turn the winch handle to raise and lower your gourd rack. The stop bolt will stop the rack once the rack reaches the top of the pole. **DO NOT OVERTIGHTEN THE CABLE OR DAMAGE MAY OCCUR.**

CARING FOR YOUR GOURD SYSTEM: Oil the pulleys once a year to keep them working smoothly. It is recommended waxing the aluminum pole once a year with car wax.

Remove the nest and clean the gourds



at the end of each season. It is highly recommended to store the complete system inside for winter storage. Check all the bolts to make sure they are all tight before putting the system up each spring. Lower your gourd rack. The stop bolt will stop the rack once it reaches the top.